



Altium.

Transforming Electronics Hardware Development

Connected Compliant Controlled

Josh Moore
Product Marketing Director, Altium

PLM Road Map™ & PDT North America 2025
PLM's Integral Role in Digital Transformation From Strategy to Execution
Elevating PLM to an Enterprise Business Solution,
the PLM Professional's Road Map to Success
May 7 & 8

CIMdata 

1

Who Is Altium?

- Founded in 1985 as one of the world's first PCB design software providers. Headquarters in San Diego, California, with over 900 employees and regional offices worldwide.
- Altium is recognized as the leading provider of electronics design software and enterprise solutions, empowering companies to bring innovative electronic products to life.
- In 2024, Altium joined forces with Renesas Electronics Corporation expanding the foundation for innovative electronics system design and lifecycle management.




2

Why are we here?



- Altium knows the struggles between ECAD and the broader development ecosystem and lifecycle management systems
 - Process alignment, data compatibility, traceability, compliance, visibility, etc., etc.
- Too often, electronics development organizations and ECAD design environments are not an integral / well-thought-out part of digital transformation strategies
- Many existing PLM-ECAD integrations rely on manual steps, siloed data, and semi-intelligent processes
- ECAD integration deficiencies extend into the broader product development process

We Envision Something Better

3

3

Immense Pressures on Electronics Development Organizations



Electronic products and systems have always been **ELECTRONICS DEPENDENT**, now they are more and more **ELECTRONICS DEFINED**

Electronics Development Complexities

Necessitates increasingly sophisticated electronics design capabilities and process integration for requirements, collaboration, co-design, compliance, verification, etc.

Pervasive Supply Chain Challenges

Poses significant risk of development disruptions requiring visibility and access to component data, risk management analytics, and collaboration with procurement

Product Management Discontinuities

Contributes to product development challenges as ECAD data and processes are not natively understood or fully connected across the broader enterprise

4

Immense Pressures on Electronics Development Organizations

Altium

Electronic products and systems have always been **ELECTRONICS DEPENDENT**, now they are more and more **ELECTRONICS DEFINED**

Electronics Hardware Complexities

Pervasive Supply Chain Challenges

Product Management Discontinuities

These affect most companies and design organizations, which contribute to operational issues and development challenges, leading to **design errors**, scheduling **delays**, cost **overruns**, compliance **issues**, time-to-market **risks**, and more.

5

Gaps in Electronics Hardware Development

Altium

DEVELOPMENT AND PRODUCT LIFECYCLE MANAGEMENT
Product Planning | Project Management | CAD Data Management | BOMs | Reporting | Product Change Management

PLM

PDM

MCAD

Mechanical

ECAD

Electronics

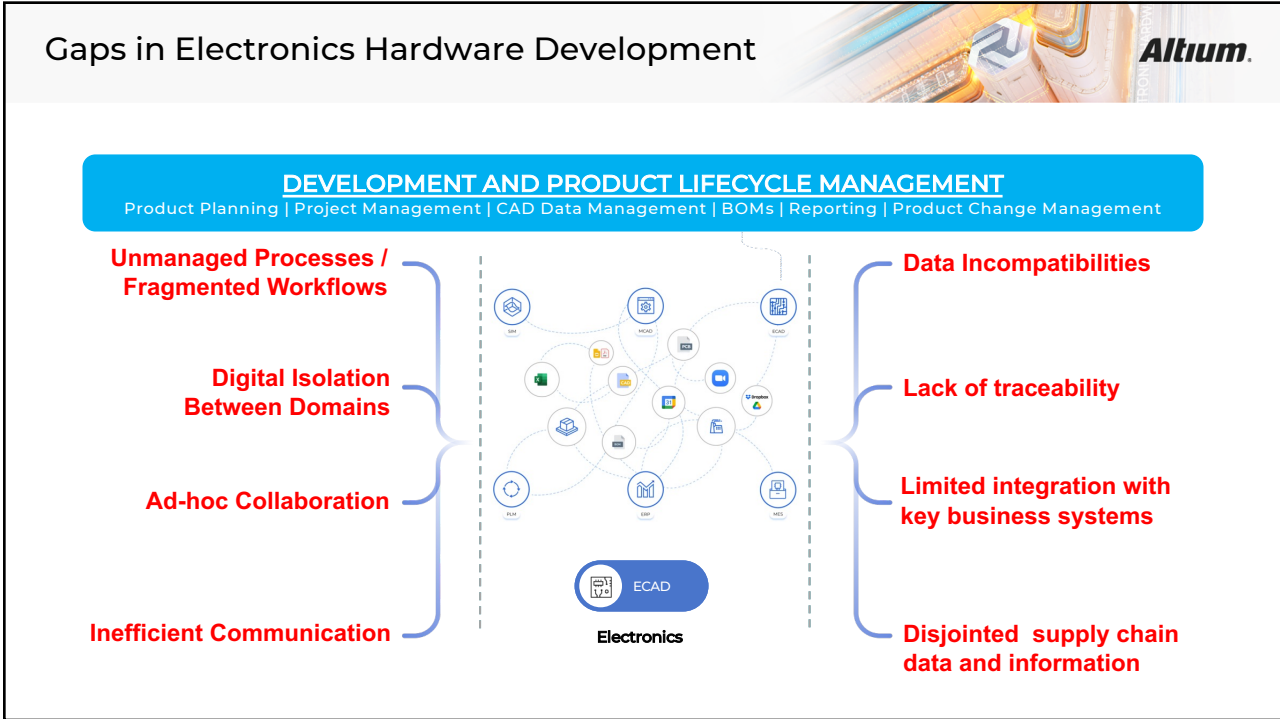
ALM

Version Control

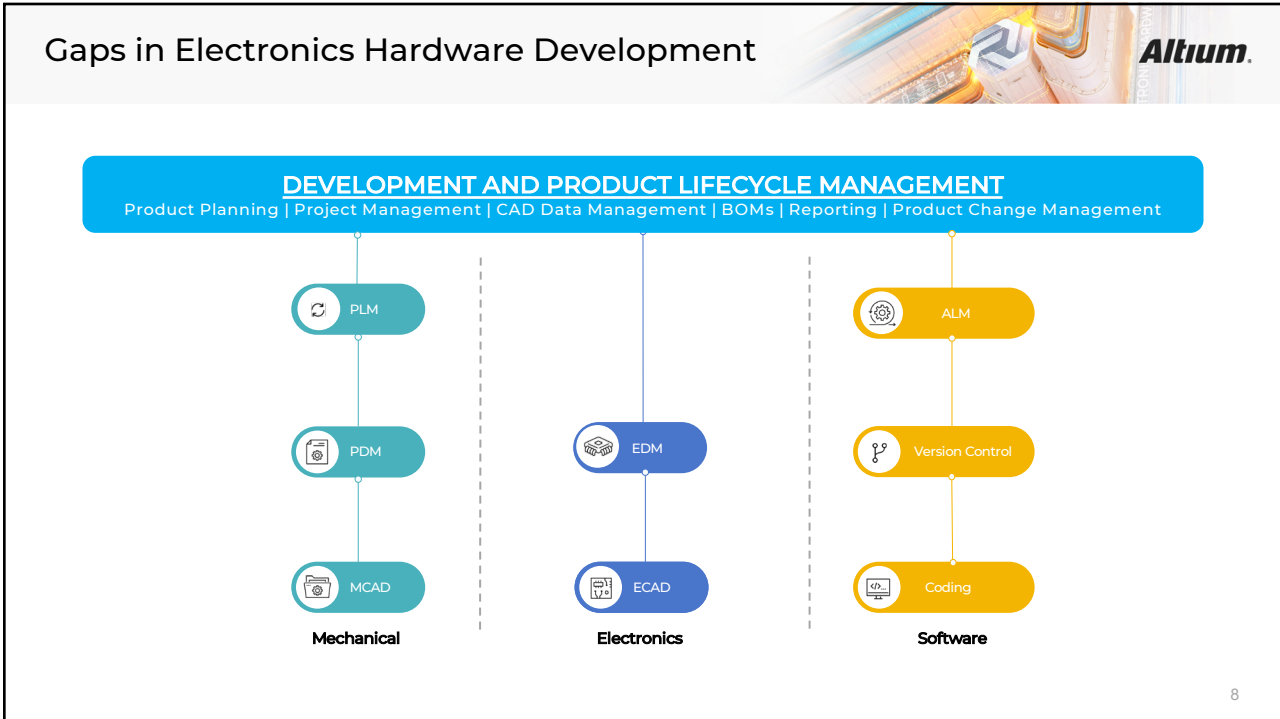
Coding

Software

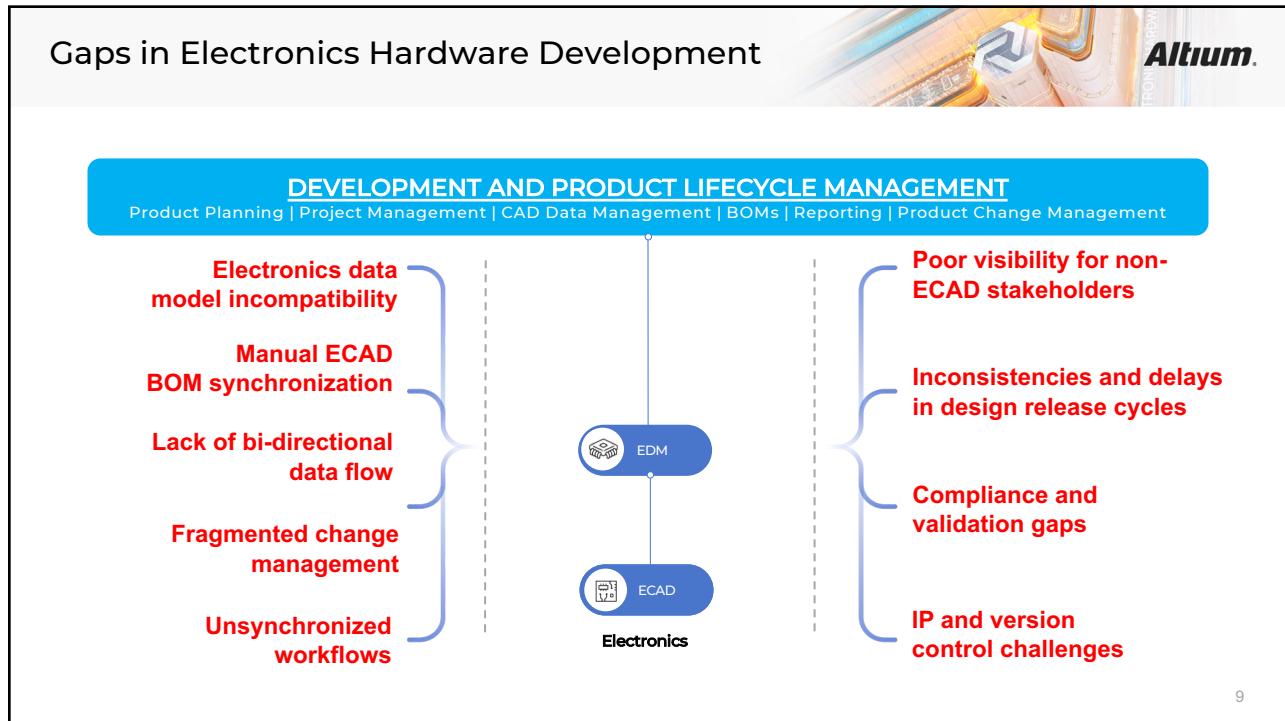
6



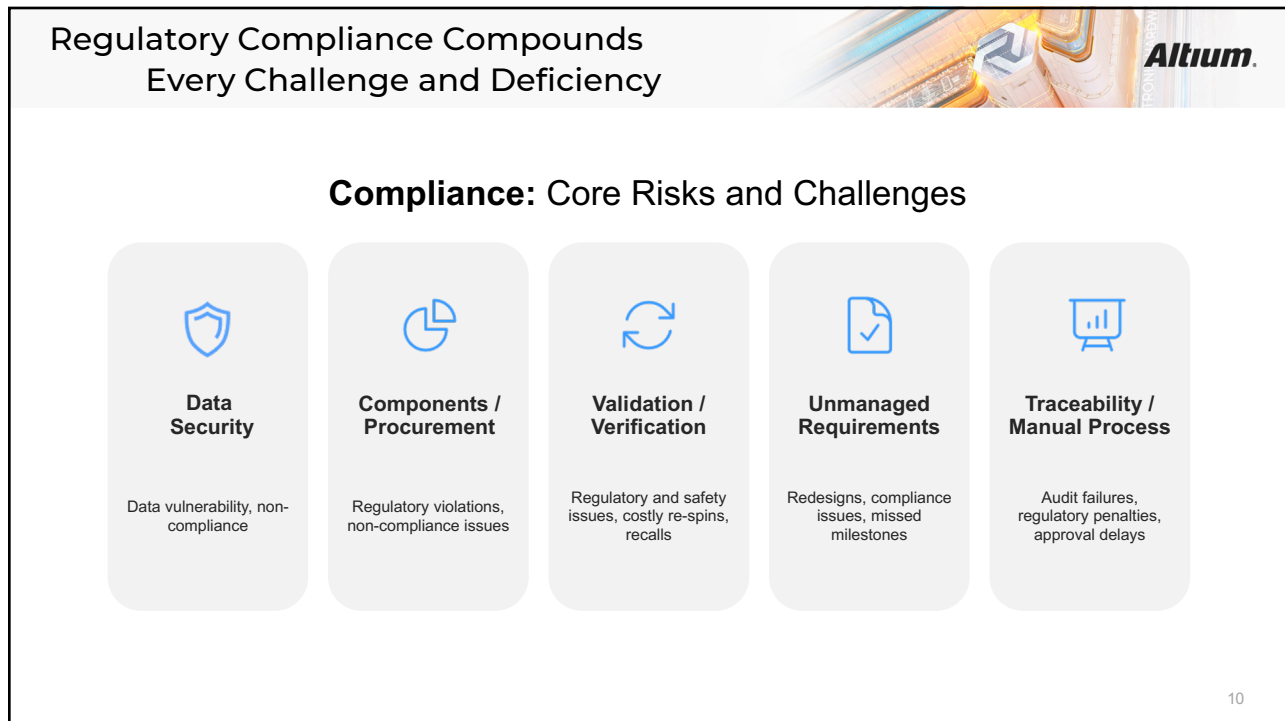
7



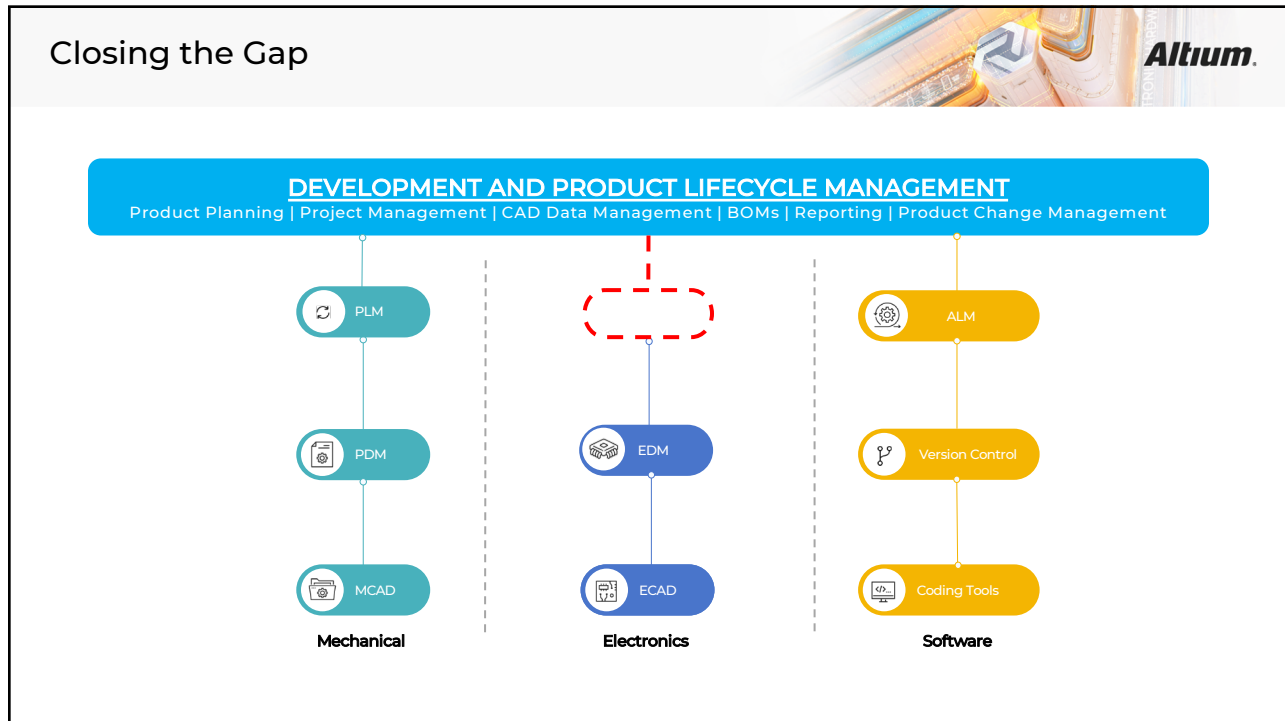
8



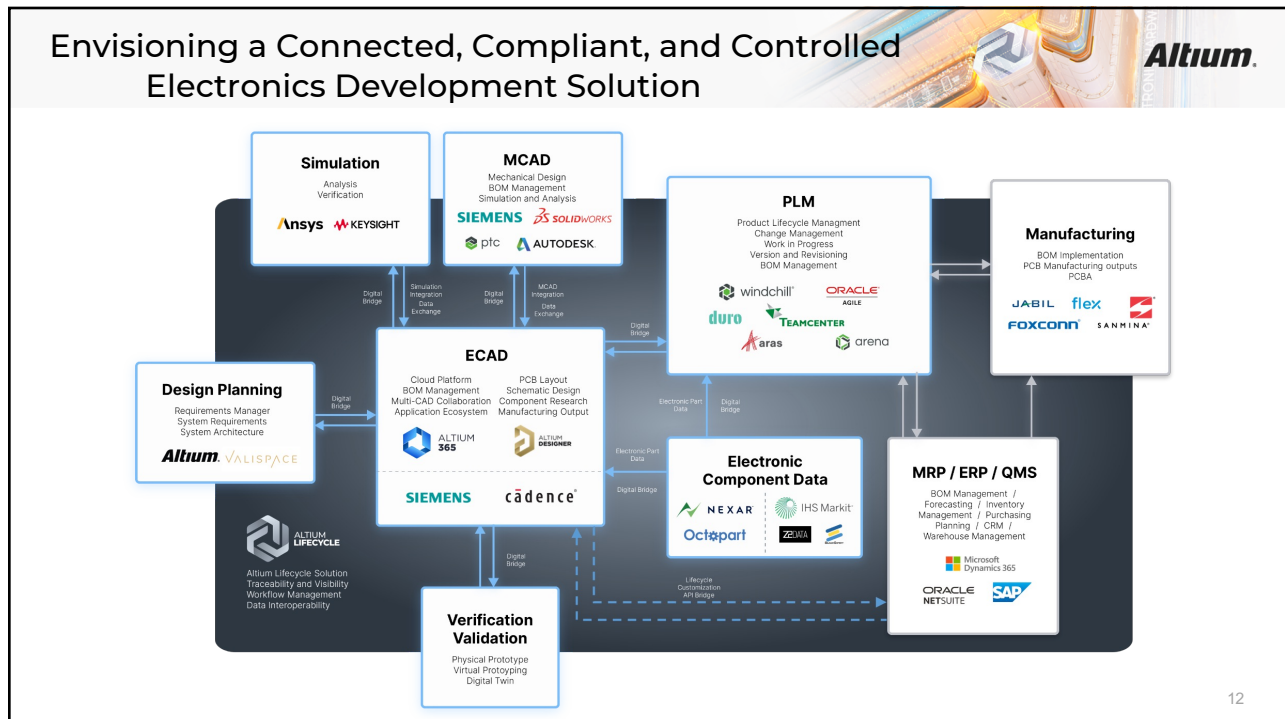
9




10




11




12

Altium Lifecycle 




Connection

- Data continuity
- Interoperability
- Integrated Workflows
- Enhanced PLM Integration




Compliance

- Traceability
- Security
- Supply Chain
- Components



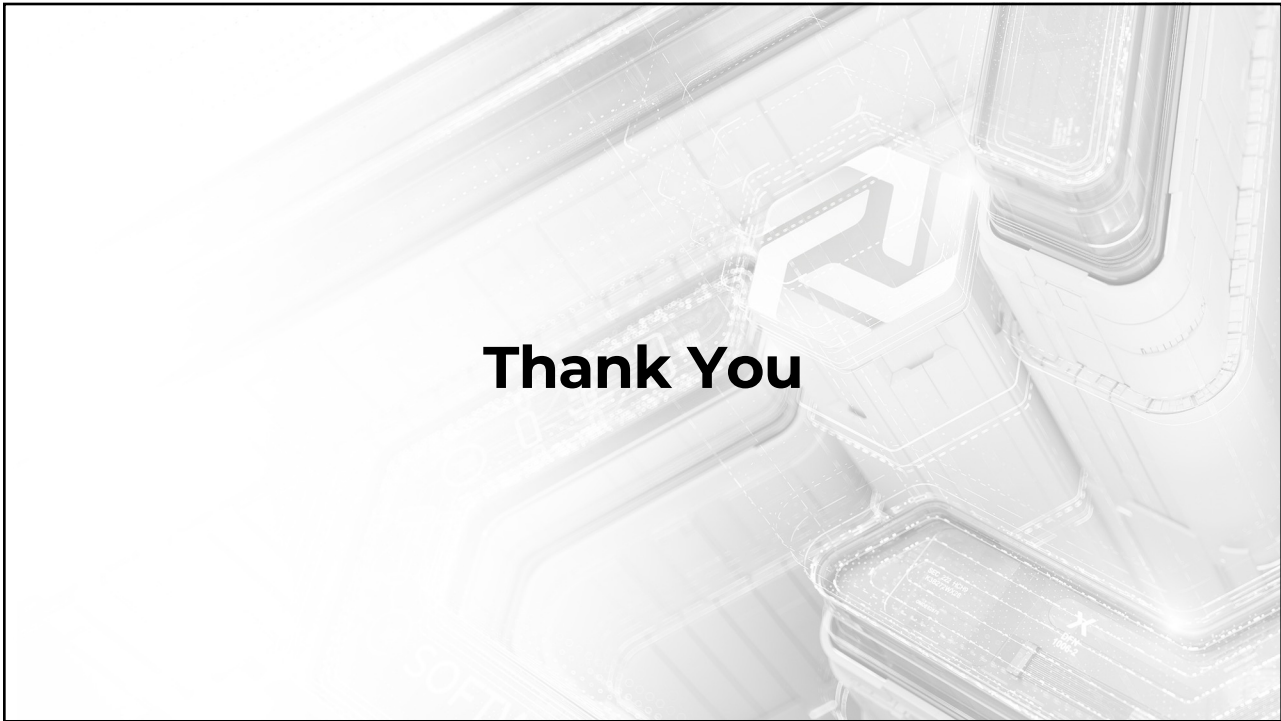
Control

- Data Integrity and Isolation
- Reliability
- Updates and Rollouts
- Single Tenant

 **A connected, compliant, and controlled electronics hardware development and lifecycle management solution for regulated electronics development.**

13

13



Thank You

14