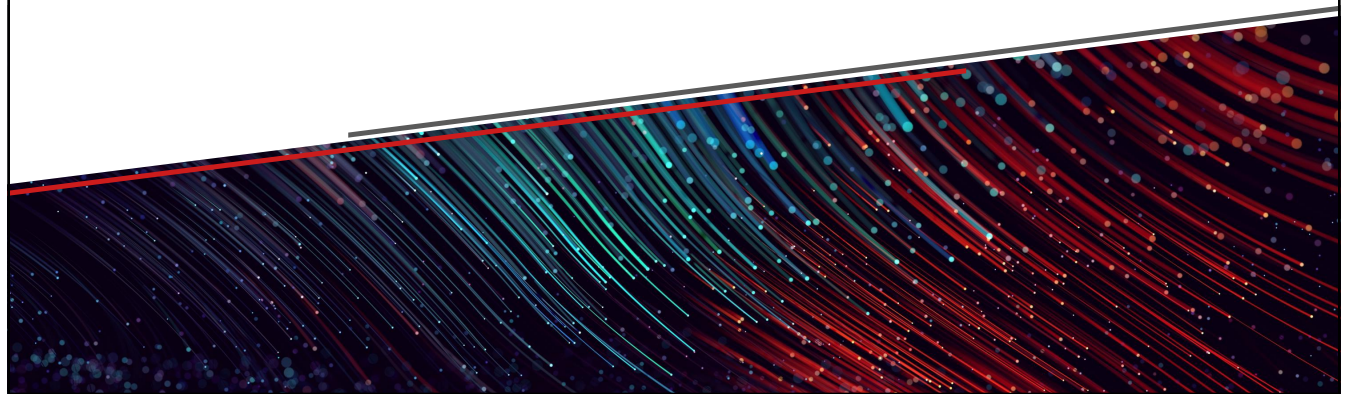




The Importance of Modeling Relationship Maturity Characteristics in a Digital Thread

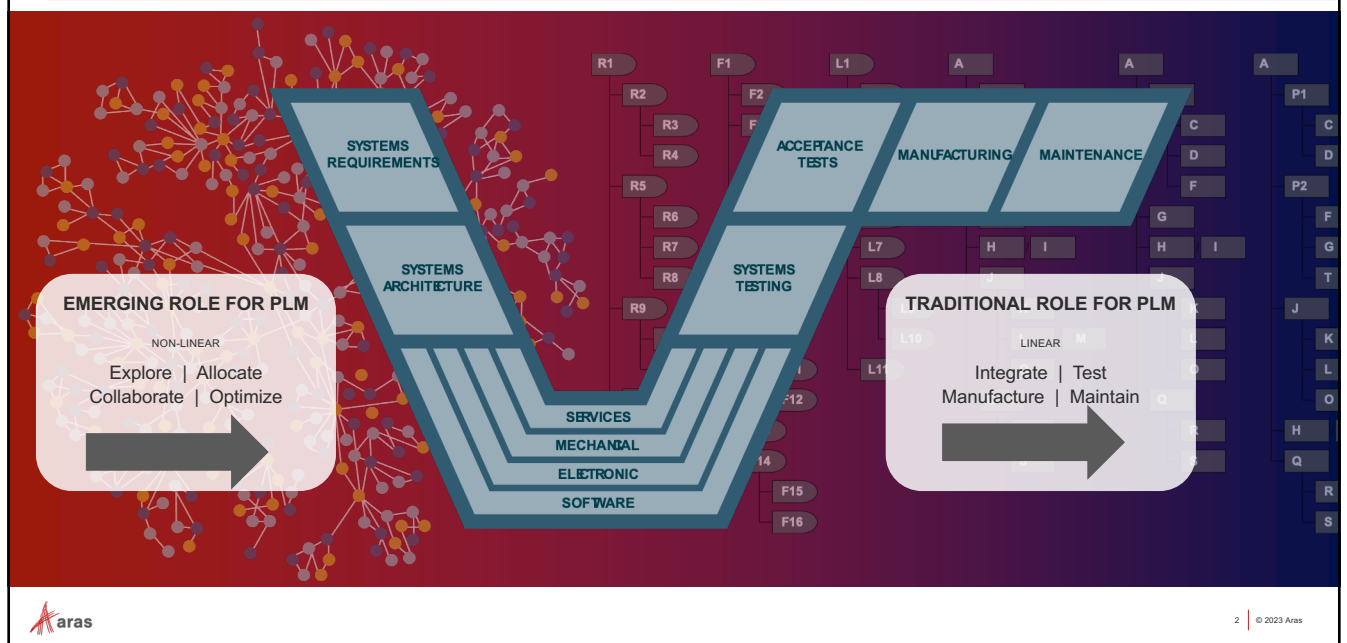
Paweł Z. Chądzyński – Aras, Sr. Director, Product Marketing

May 3, 2023



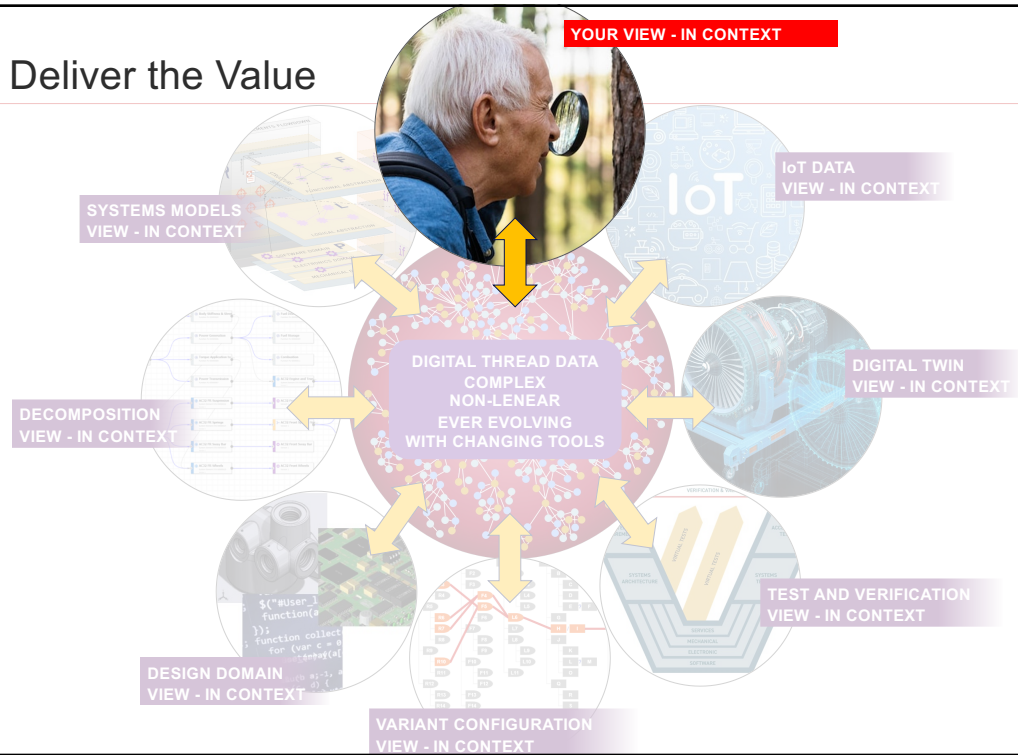
1

Ahead of BOM-centric Traceability



2

Views Deliver the Value

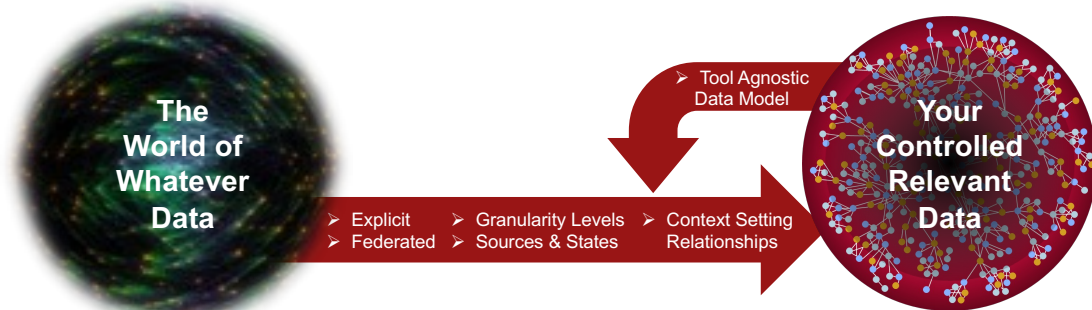


3

Tool-Agnostic Data Model

Very long-term traceability between data elements:

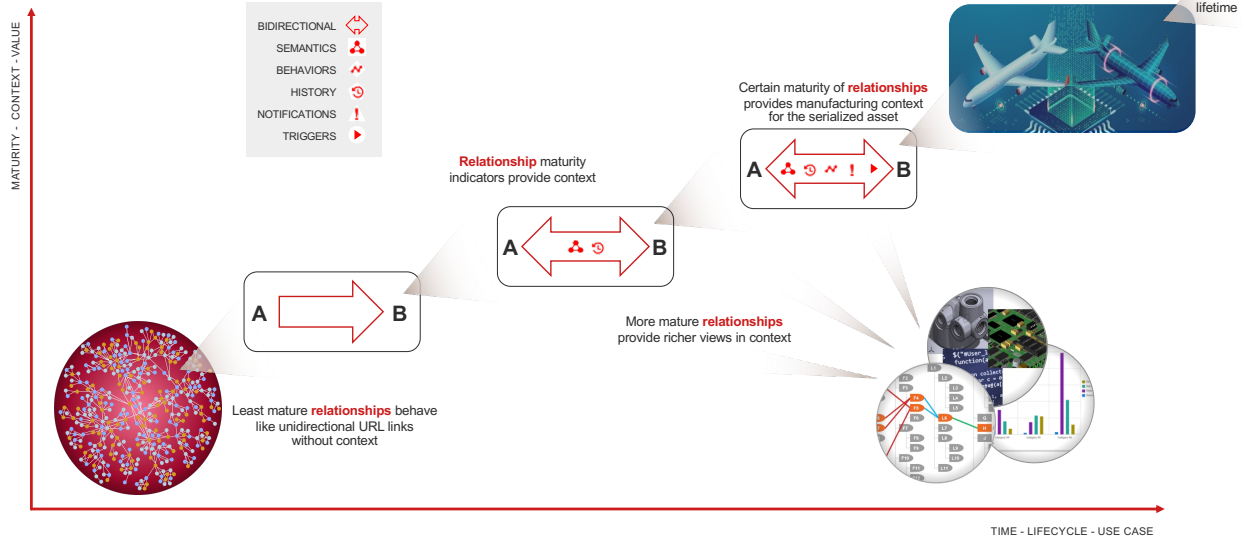
- Changing Authoring Tools
- Isolated Platforms/Silos
- Custom Data Containers
- Static content based on file standards
- Unstructured Information



4

Relationships with Evolving Maturity

Relationships continue maturing providing digital twin context of the serialized asset



5

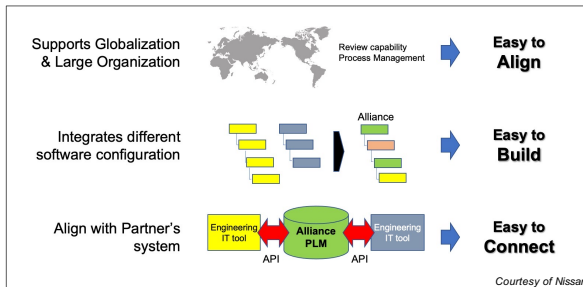
Nissan Use Case (*) - Managing In-Vehicle Software

Business Challenges

- Difficulty managing very complex in-vehicle software variants
- Lack of traceability and reuse
- Duplication of effort between Nissan and Partners
- Manual and error-prone process
- Lack of integration with Partners

Solution

- A single library of individual software functions
- A single digital thread managed on a single platform
- Maturity context of digital thread relationships
- Integration with Partner's digital thread



Digital thread built on the Aras Innovator platform

Benefits Achieved (Nissan & Partners)

- Optimized reuse of existing and verified software implementations
- Consistent traceability of requirement-function-verification
- Instant identification of affected software configurations
- Improved quality, reduced development time, and optimization of resources

"Ten years ago, this idea was so grand and difficult that I couldn't find any capable solutions. Today, Aras Innovator allows step-by-step realization of these goals via its 'easy to build,' 'easy to align,' and 'easy to connect' characteristics."

Hiroaki Nemoto, Engineering & Design Systems, Nissan Motor Co.



(*) <https://www.aras.com/en/resources/all/cs-nissan>

6



Thank you!

Paweł Z. Chądzyński
pchadzynski@aras.com

