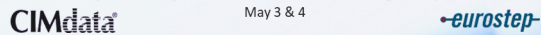




# Top Success Factors in PLM Implementations

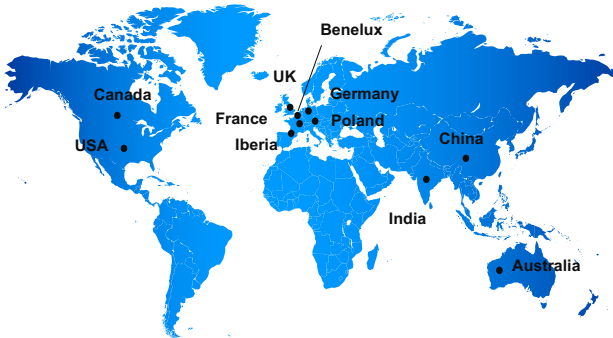
**Jeremie Labbe**  
Head of PLM Architecture Consulting Practice at Processia

PLM Road Map™ & PDT North America 2023  
*The Digital Thread in a Heterogeneous, Extended Enterprise Reality*  
A call for PLM Professionals to share their knowledge & experience



1

## Processia 22 Years - Consulting & System Integrator certified by Dassault Systemes



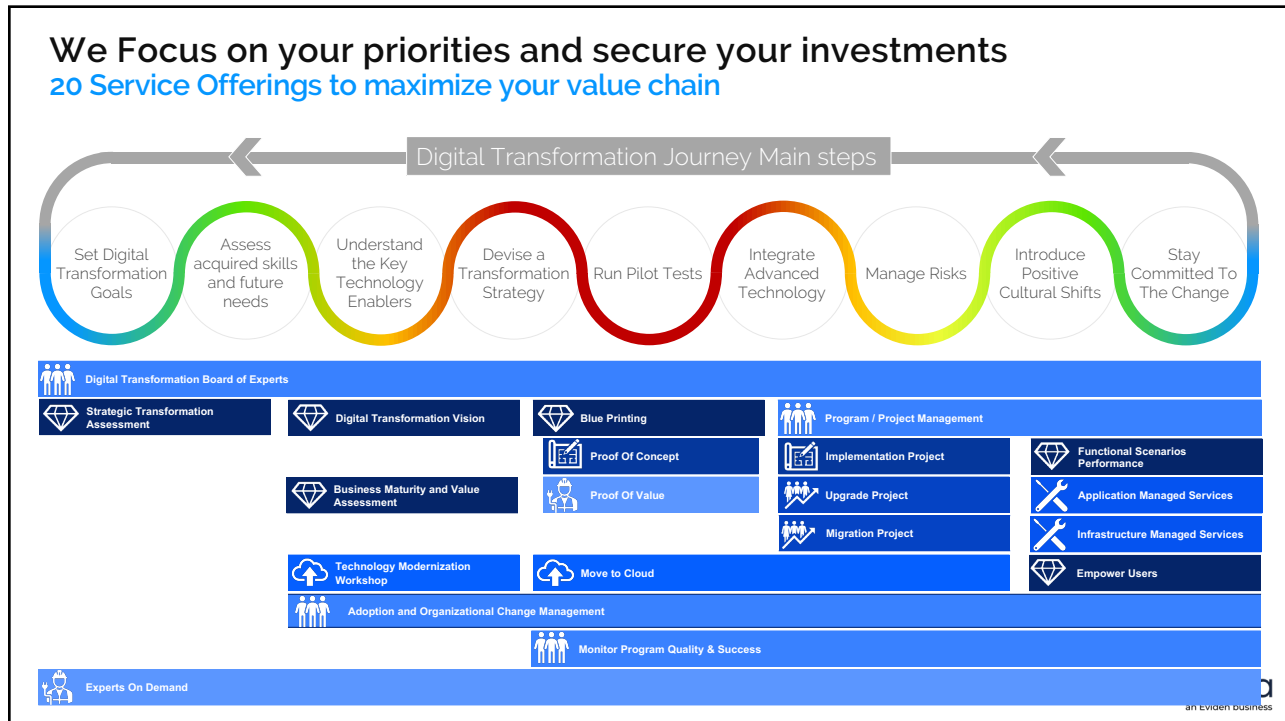
**Jeremie Labbe**

Expert in **PLM Digital Transformation** initiatives as part of Processia.  
Focus on developing PLM program visions and roadmaps while acting as senior advisor on PLM programs architecture.

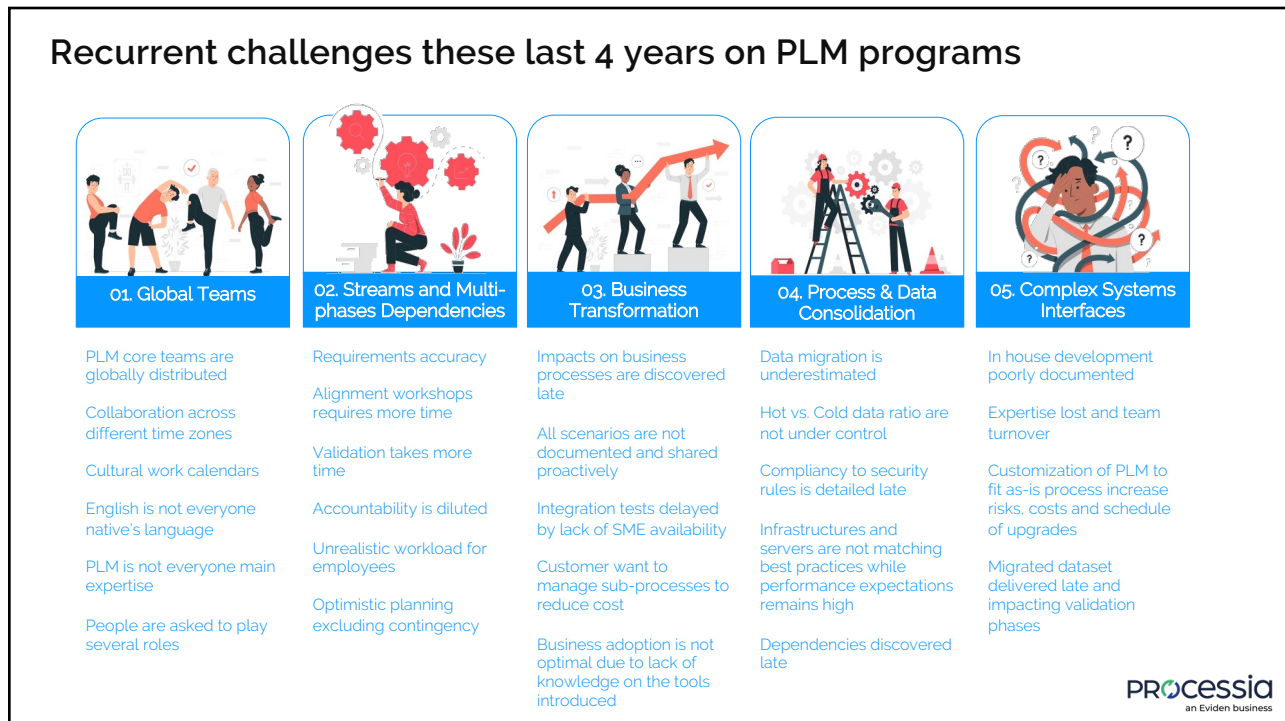
As a certified **TOGAF Architect** and **Dassault Systèmes Solutions Architect**, Jeremie has influenced many PLM programs for the past 20 years in the industries of A&D, Transport and Mobility, Health Science, Industrial Equipment and Consumer goods.



2




3




4

## How to reduce risks and avoid problems during execution


5 responses




01. Global Teams



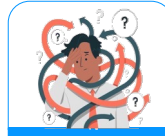
02. Streams and Multi-phases Dependencies



03. Business Transformation



04. Process & Data Consolidation



05. Complex Systems Interfaces

PMO & Project Governance	Commitments Partnership Support & Collaboration	Vision Visibility & KPI			
Architecture & Design	Collaboration Commitment	Concurrent Design	Communication Scalability with OOTB		Scalability PCS Concurrent Design
Apps & Interface development		Continuous Integration Smoke testing	Deployment strategy		Dedicated env. Concurrent Design
Data Migration Accelerators			Early Use cases Early schema mapping Early Dry-Runs		
OCM & Training			Communication Proactiveness		

**Processia**  
an Eviden business

5

## Conclusion

- PLM programs provides essential support for business innovation
- The race to reduce cost is exposing teams and their potentials to meet deadlines
- An early planning with a strong partnership is key
- Governance requires executives on both side to be weekly/daily involved
- Underestimated risks can have dramatic impacts on budget and schedule
- Decision making rhythm is accelerated

Let me know if you have questions – meet me and my colleagues !

Thank you

**Processia**  
an Eviden business

6