



Digital Product Fundamentals

PLM Road Map™ & PDT North America 2025
PLM's Integral Role in Digital Transformation From Strategy to Execution
Elevating PLM to an Enterprise Business Solution,
the PLM Professional's Road Map to Success
May 7 & 8



Jonathan Scott
7 MAY 2025



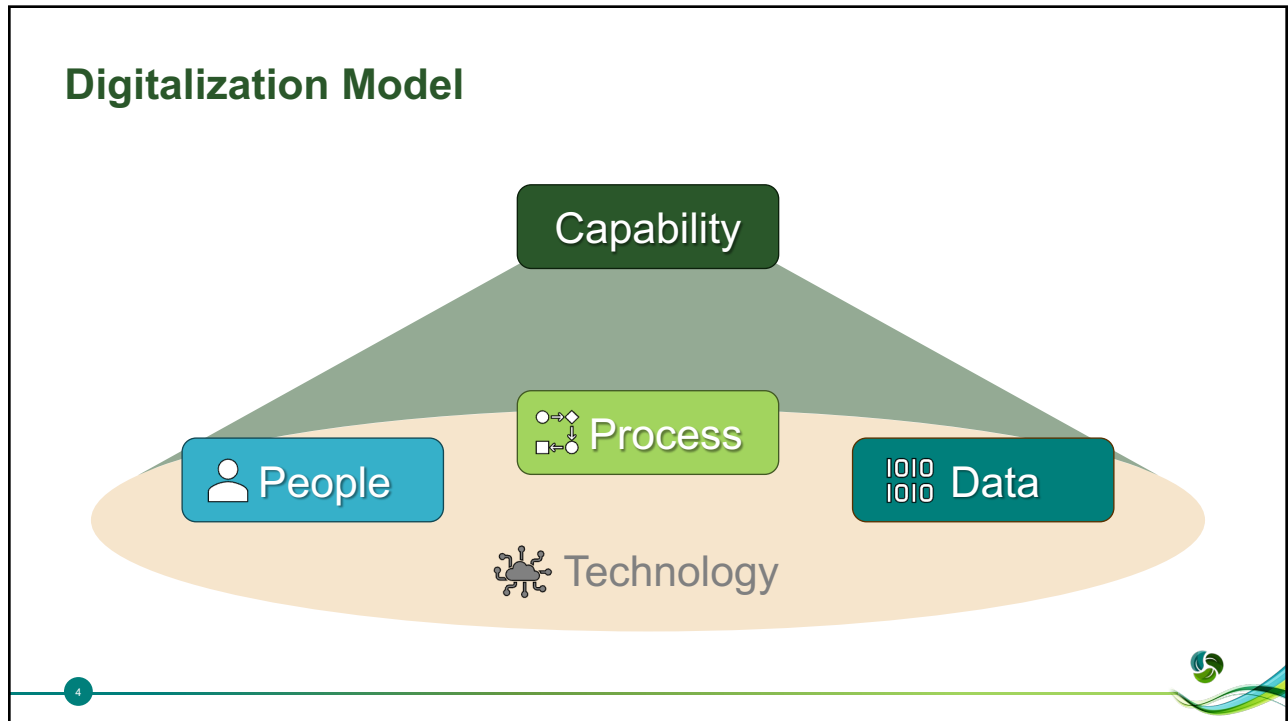
1

The Problem(s)

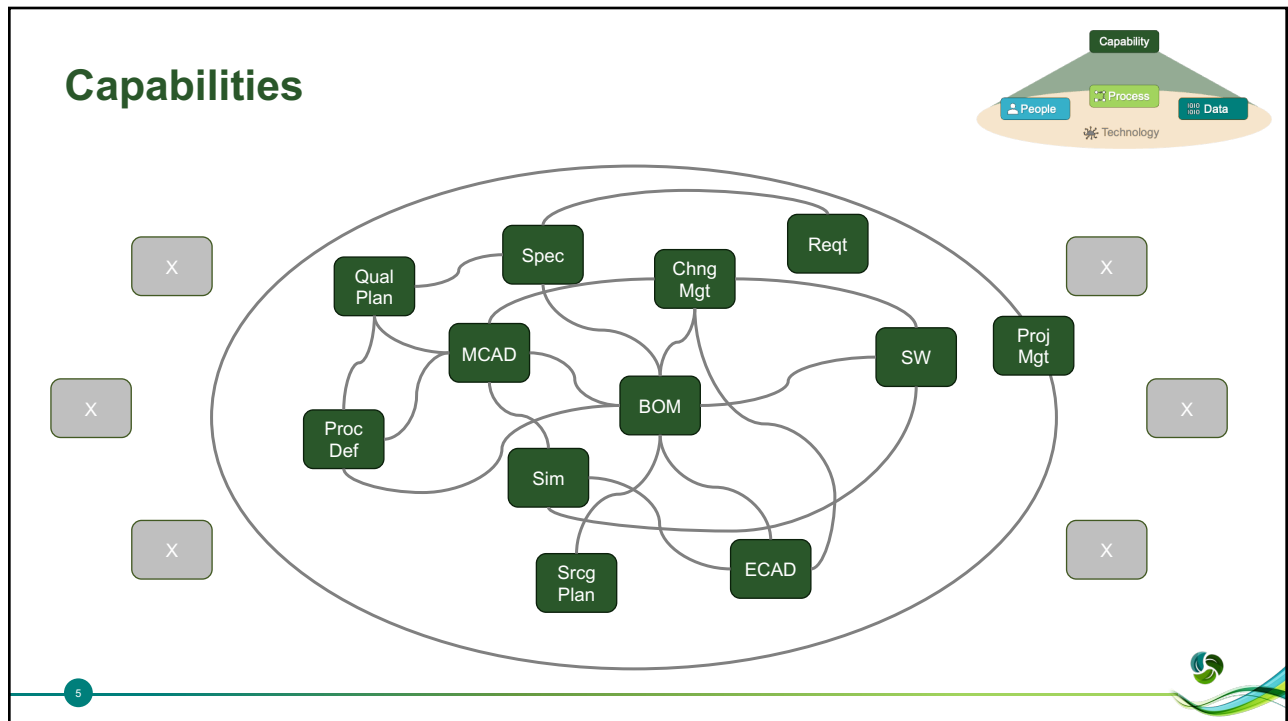
- AI's fear (of disruption) and uncertainty (of direction)
- Heterogeneous technology environment
- Dynamic business priorities amidst uncertain macro trends



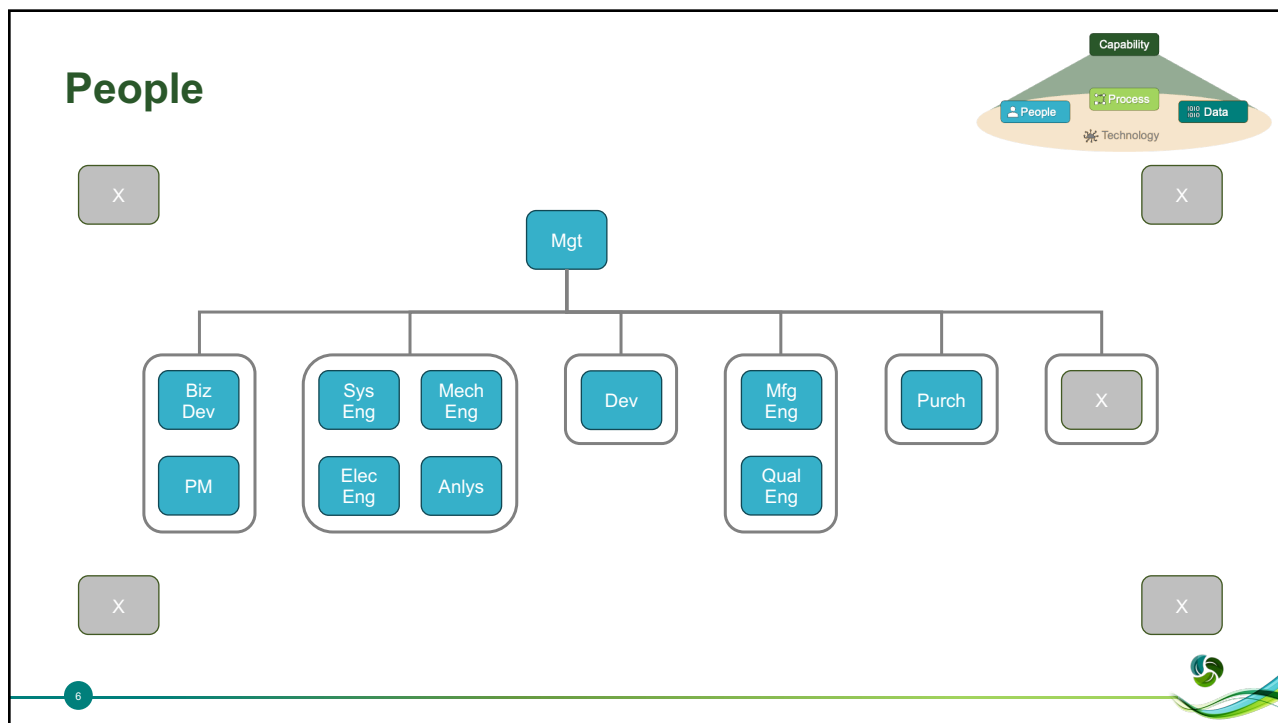
3



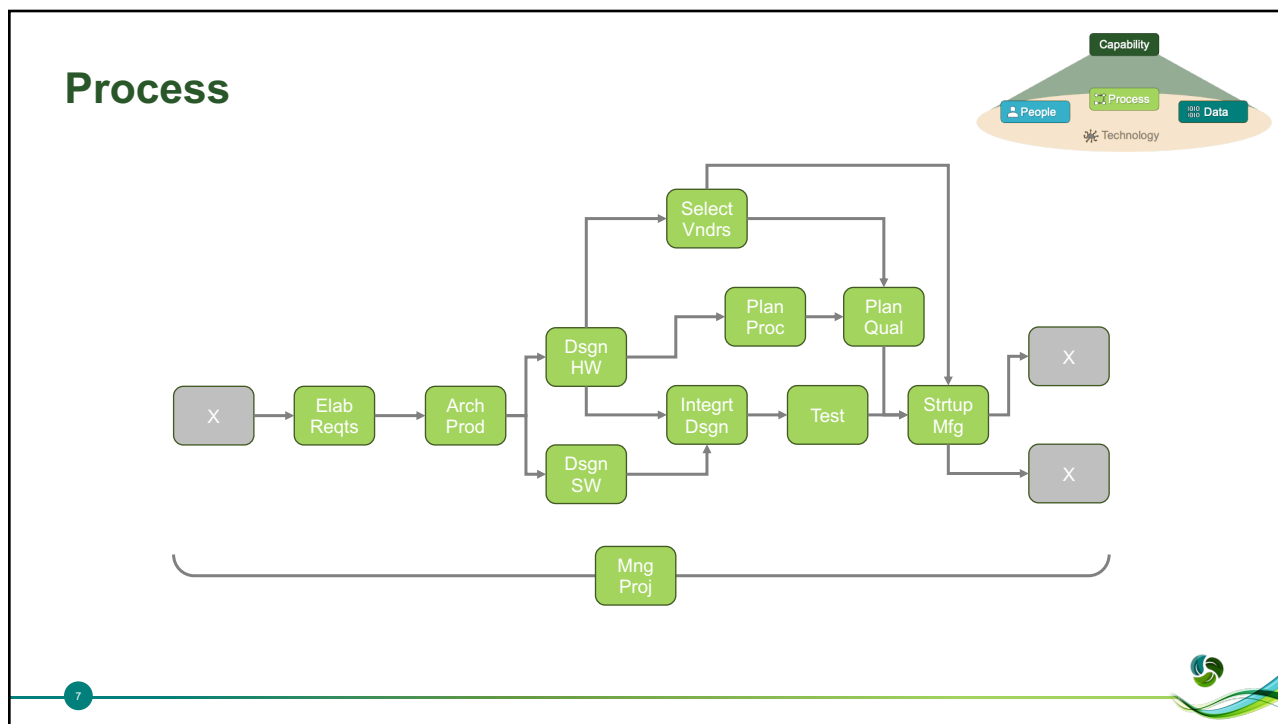
4



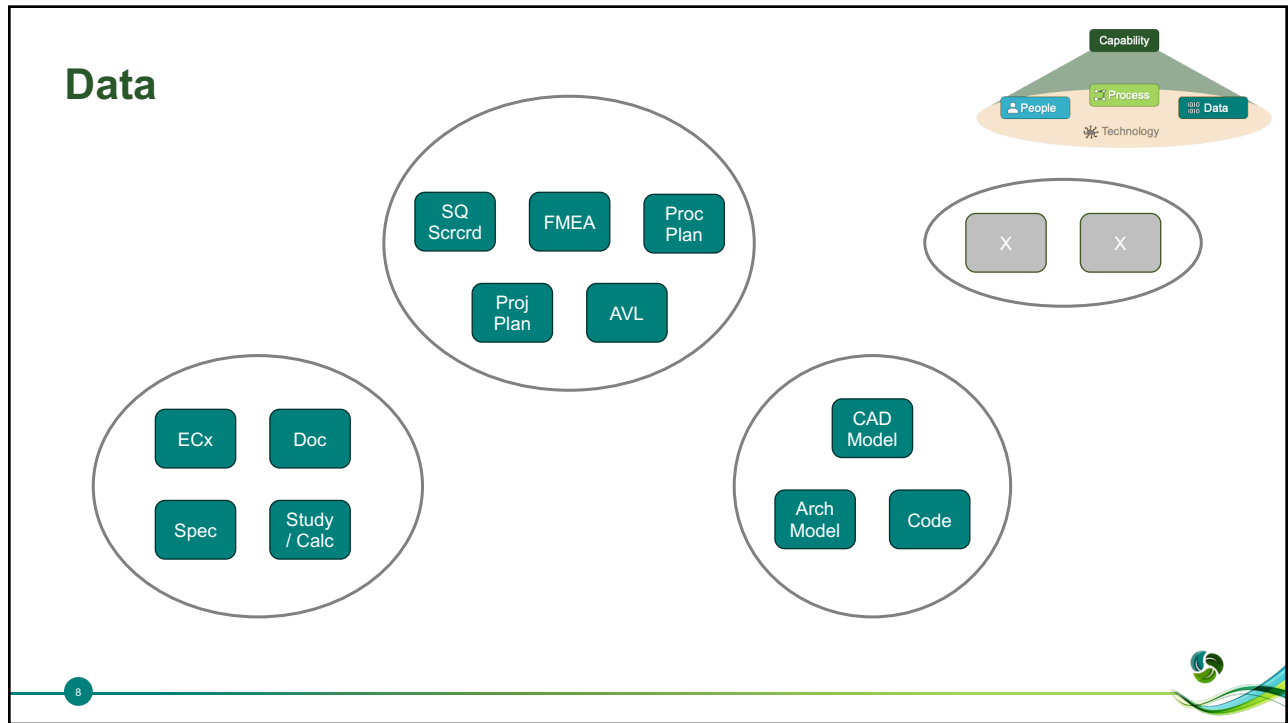
5



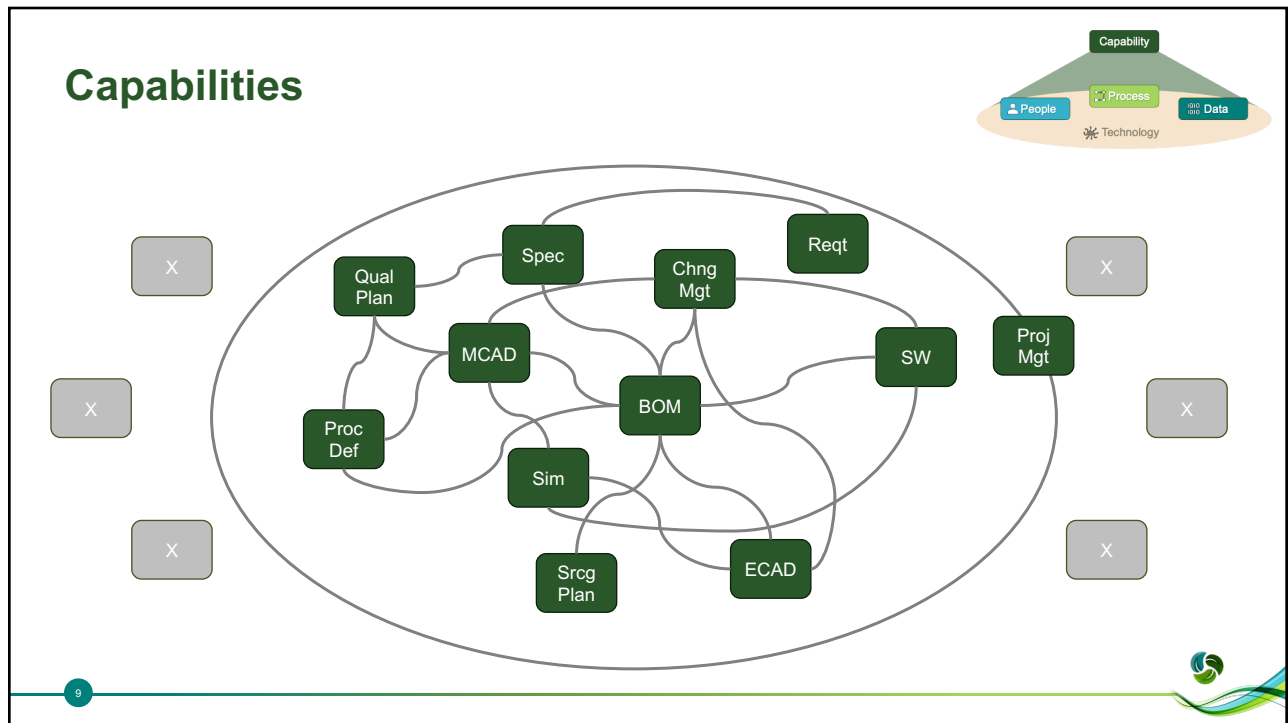
6



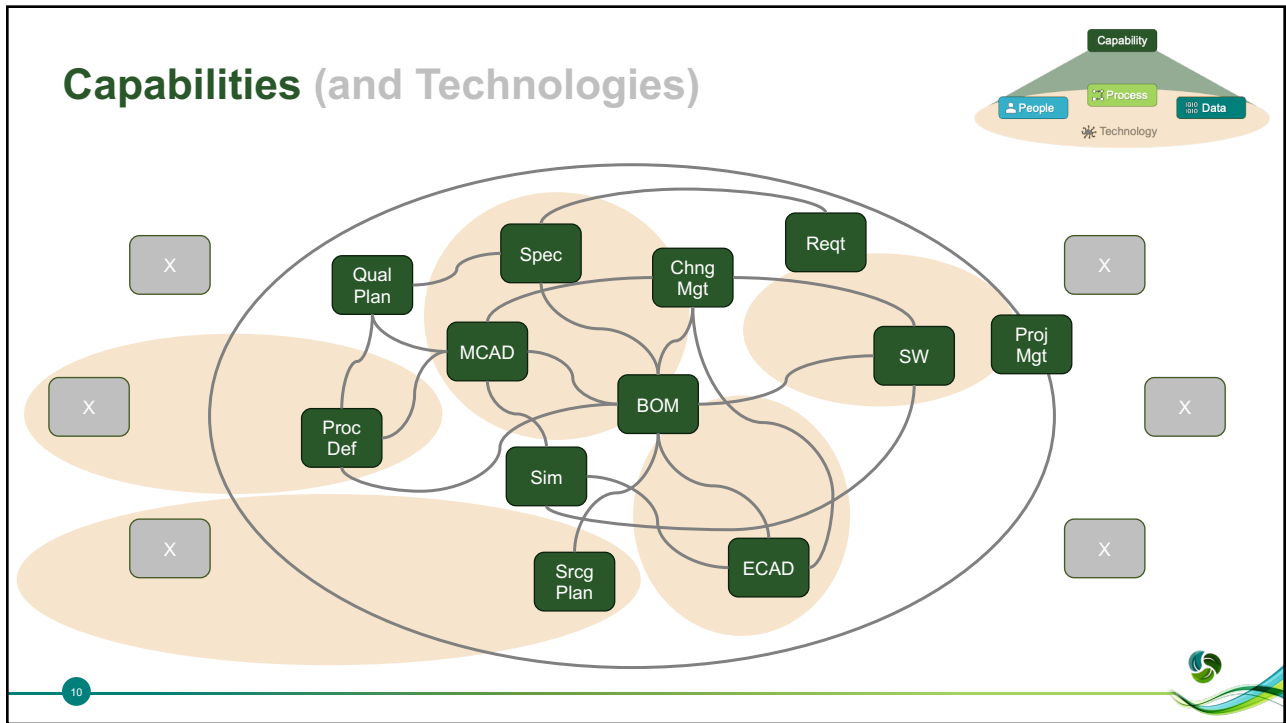
7



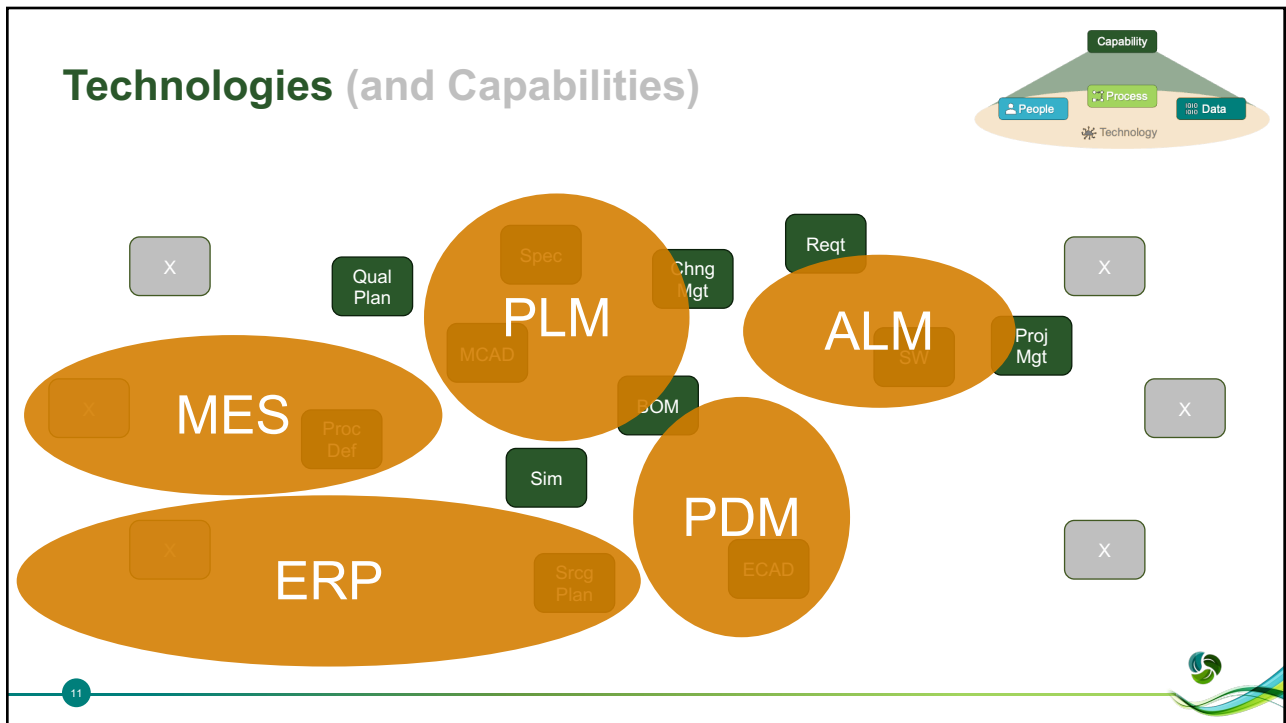
8



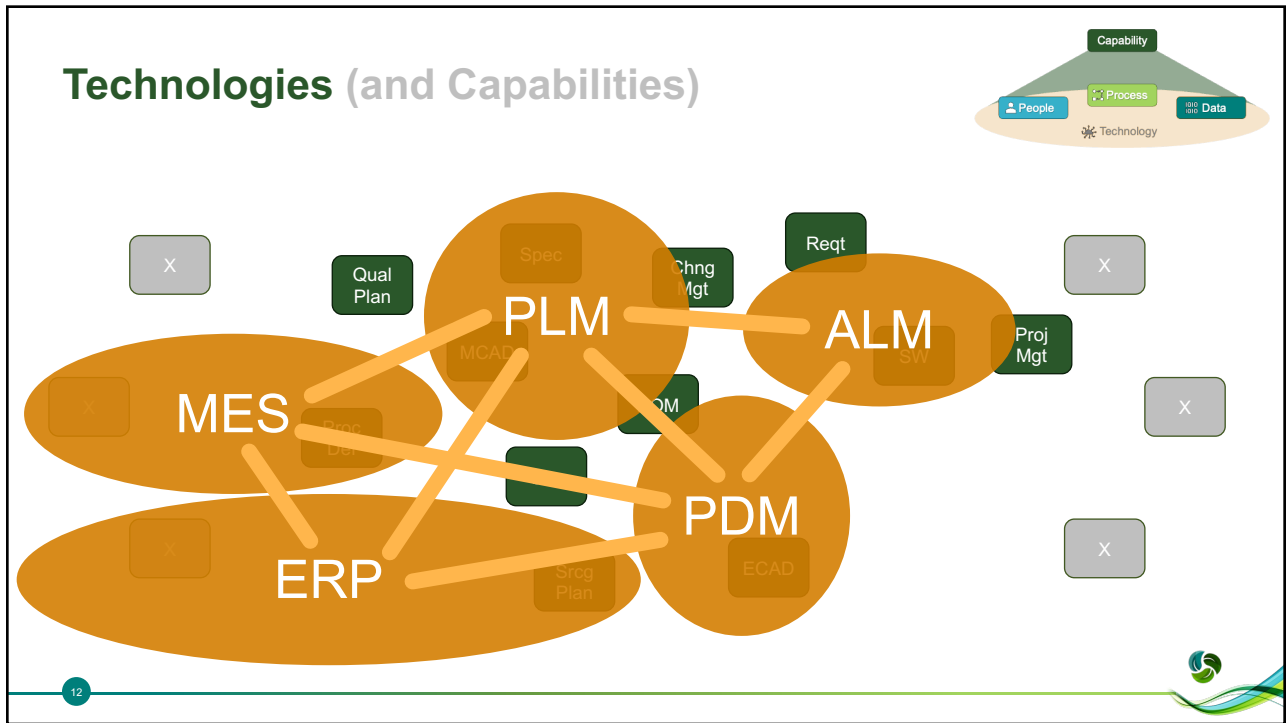
9



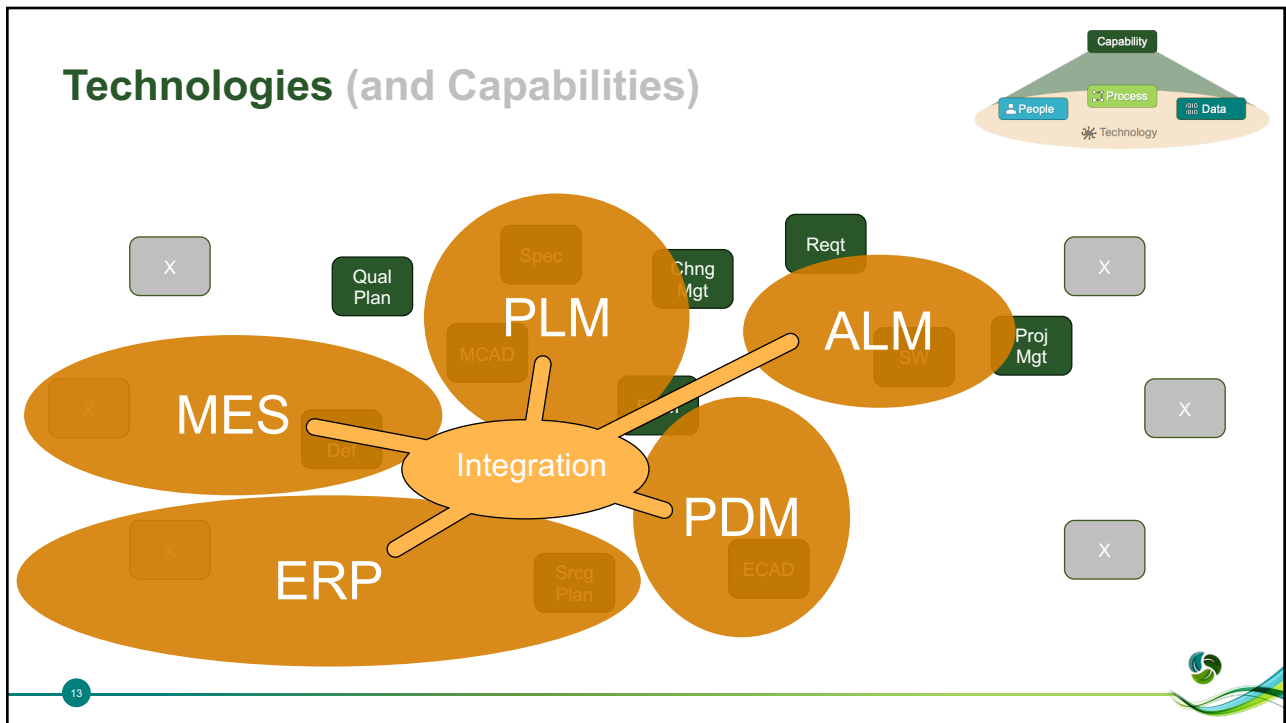
10



11



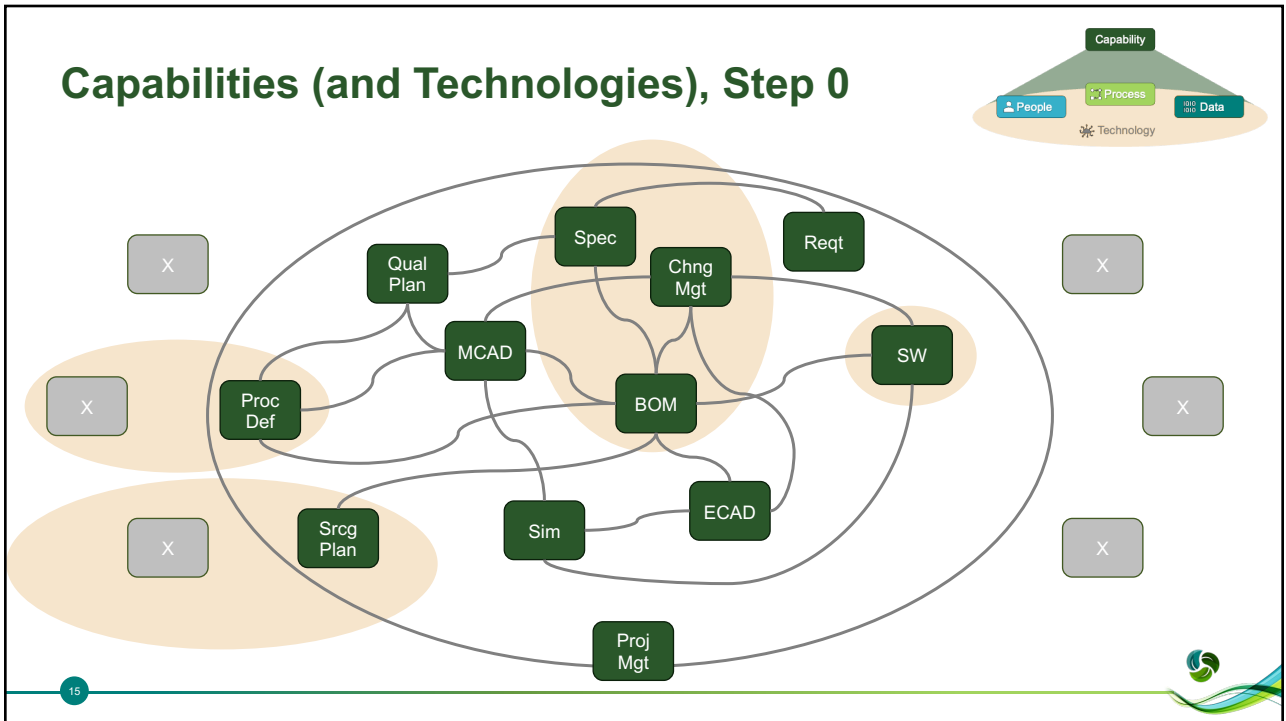
12



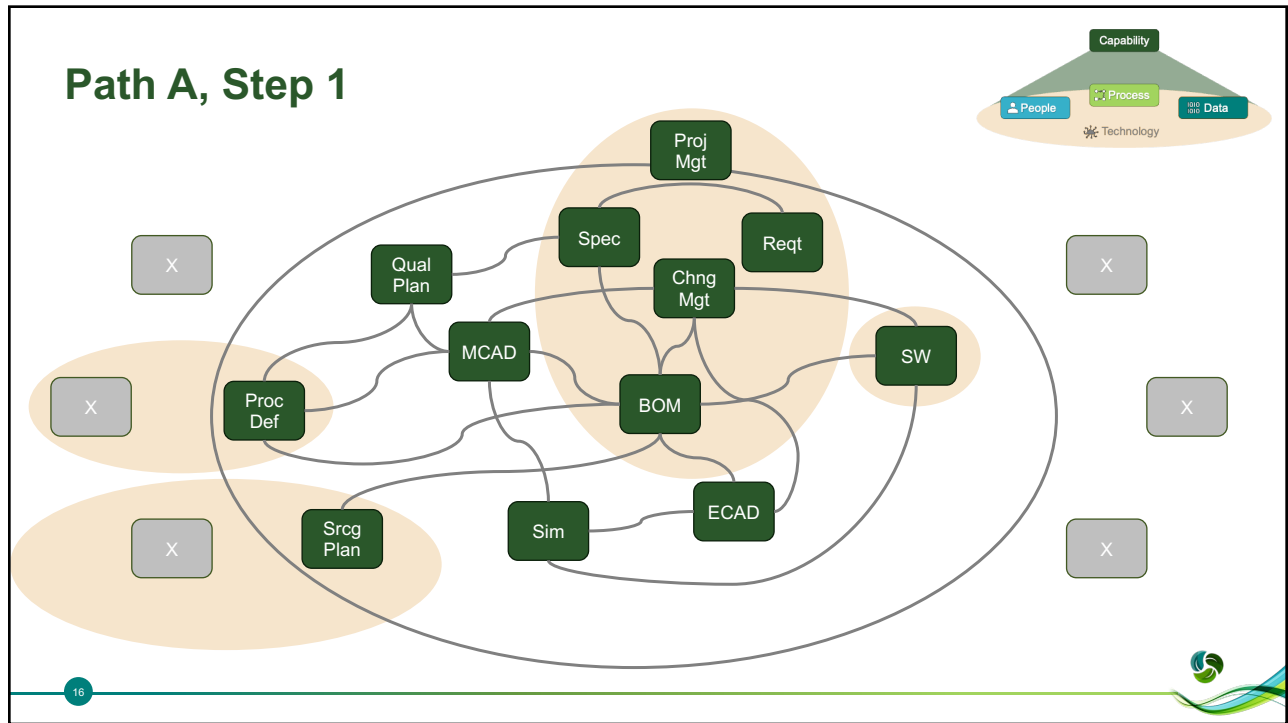
13



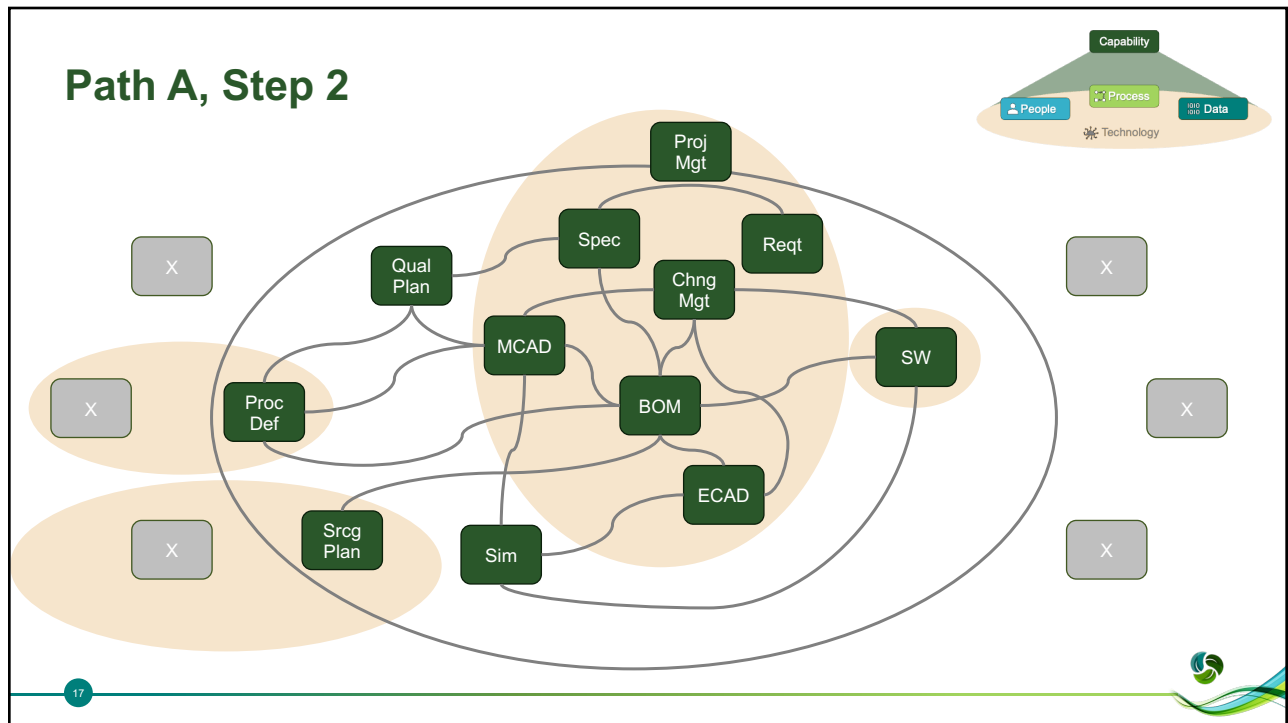
14



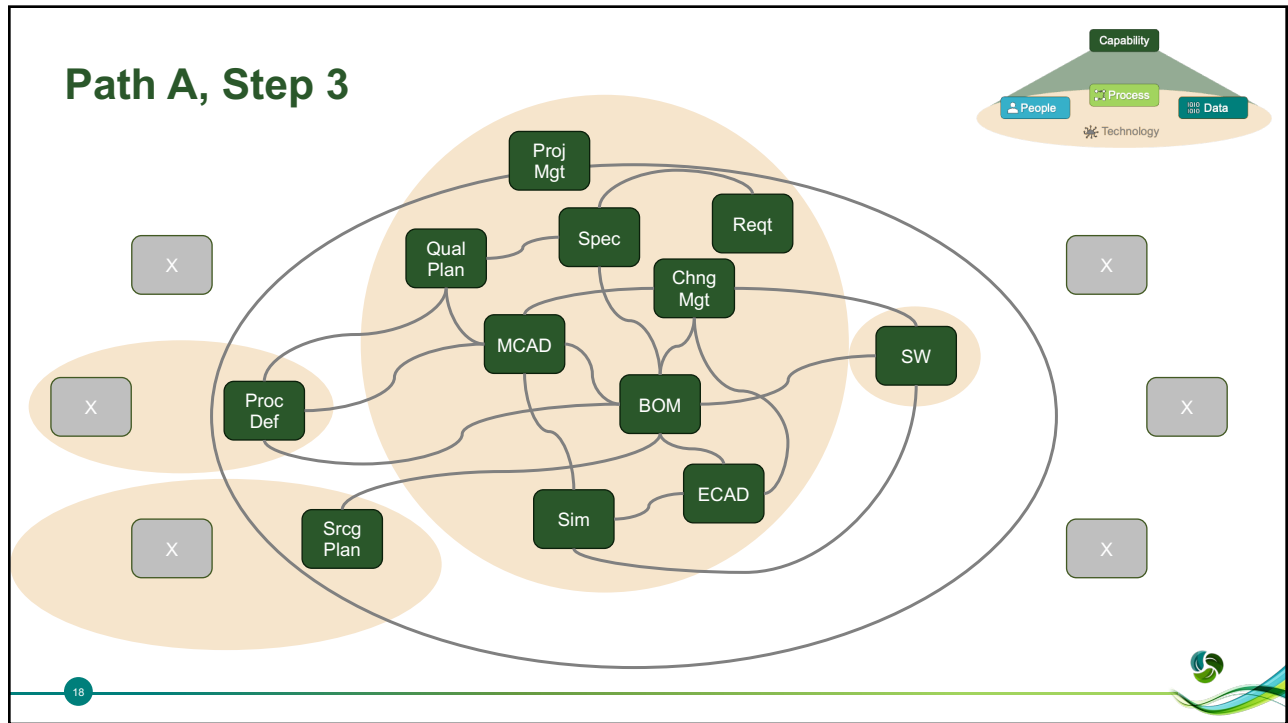
15



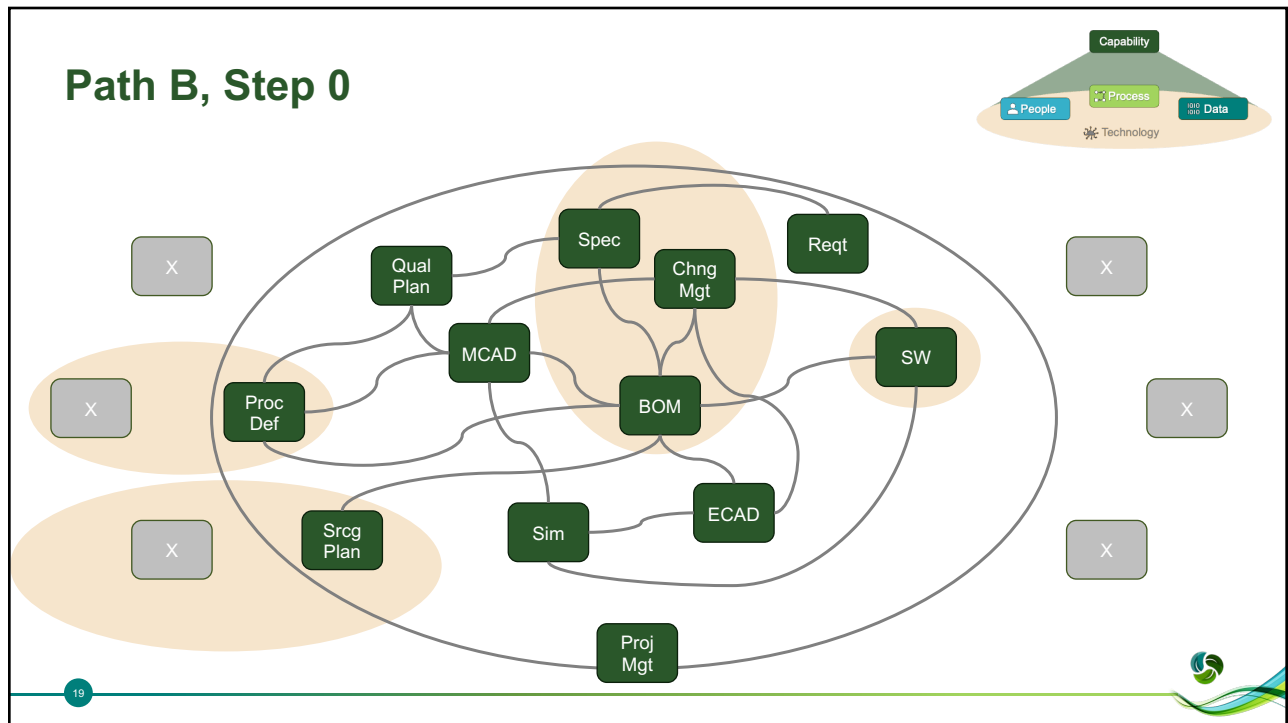
16



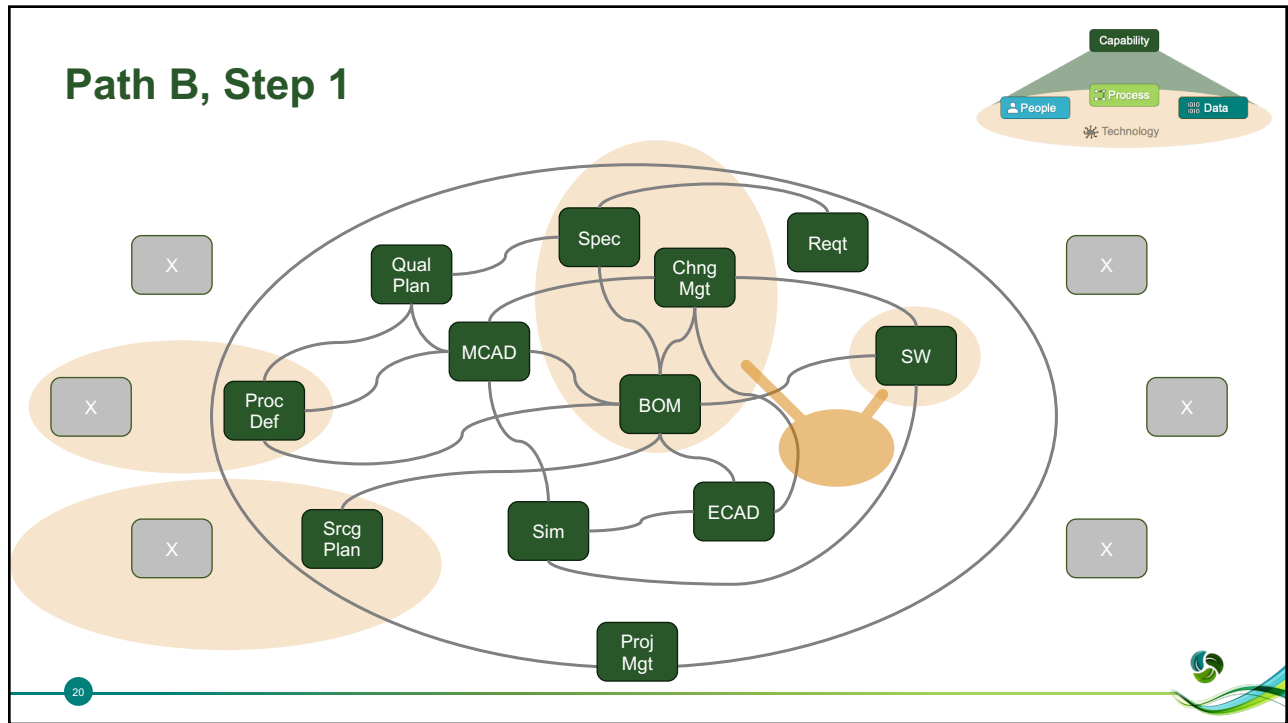
17



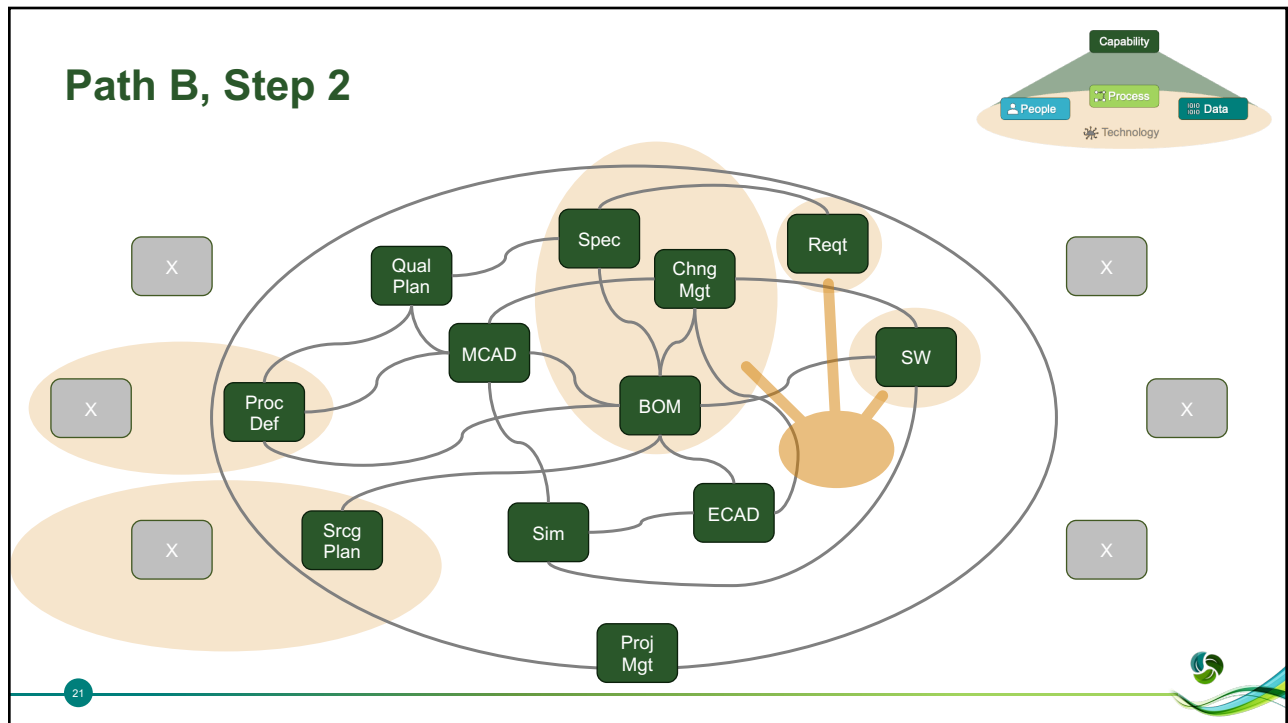
18



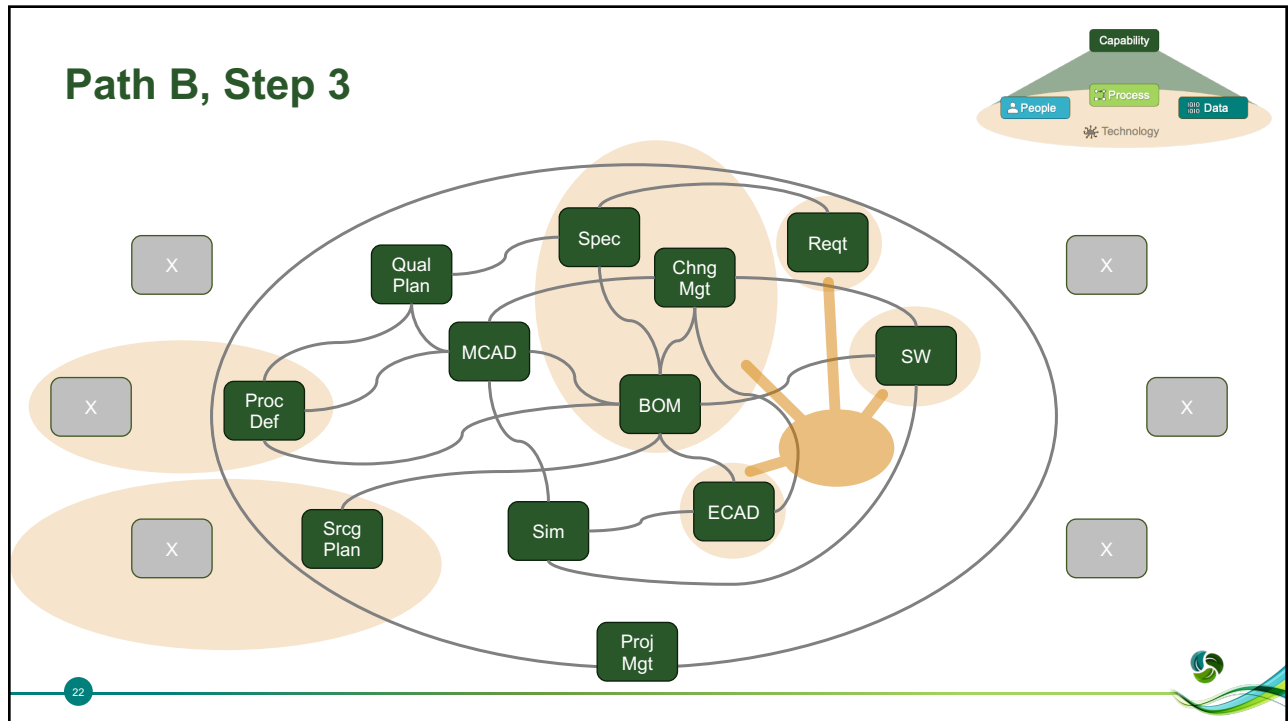
19



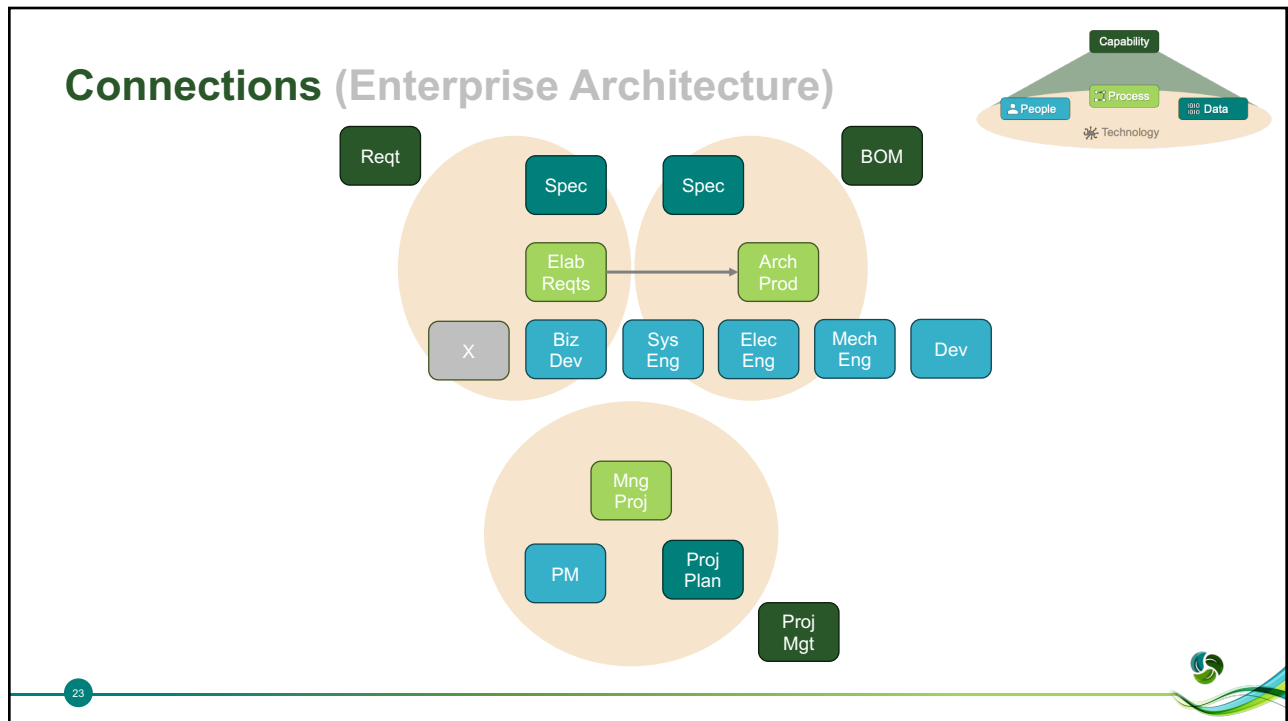
20



21



22



23

The Answer(s)

1. Prioritize capabilities
2. Understand connections
3. Plan roadmap with options
4. Build out in pieces and be flexible



5. Avoid the snake oil

Razorleaf's Offerings

Consulting

- Help you learn (product digitalization)
- Help you plan (roadmap, architecture...)
- Help you build (implement, integrate...)

Products

- Extend PLM without code
- Integrate Digital Engineering tools
- Migrate digital product data



Razorleaf

Contact Us

Corporate Headquarters:
3732 Fishcreek Road
Suite 291
Stow, OH 44224
330-676-0022

Sales: sales@razorleaf.com
Support: support@razorleaf.com
Training: training@razorleaf.com
Careers: careers@razorleaf.com

European Offices:
Netherlands: +32 475 83 43 09
Switzerland: +41 79 6239065
UK: +44 1604 521 075

Thank You

